

EXPERIENCE MAPPING

Ensure that every encounter users or customers have with your brand is a good one.

Each customer or user relationship is a journey, and each journey involves specific encounters, milestones and sign posts over weeks, months, or years. To proactively shape the journeys that your customers have with your organization, service or product, you must understand their experience in all its facets.

OUR SERVICE

Akendi is expert in customer and user Experience Mapping. This technique captures the customer experience lifecycle and each touch point along the way to provide you with insights such as:

- Which touch points impact customer retention and which don't
- Which touch points fulfill their intended value and which don't
- Gaps in the customer experience that are experienced during the journey
- Where too little effort or investment is harming the brand and the product or service experience

Duration

On average, Experience Mapping projects range from two to six weeks in duration.

ABOUT AKENDI

Akendi is a human experience design firm, leveraging equal parts user experience research and creative design excellence. We provide strategic insights and analysis about customer and user behaviour, combine this knowledge with inspired creative design, and architect the user's experience to meet organization goals. The result is intentional products and services that enable organizations to improve effectiveness, engage users and provide remarkable customer experiences to their audiences.

OUR APPROACH

OUR EXPERIENCE MAPPING PROCESS

Define Experience

- Identify values and goals
- Understand business model

Mapping

- Internal stakeholders
- End customers and users

Analyze Research

- Apply to mapping canvas
- Deepen understanding through surveys

Visualize Map

- Appropriate communication
- Actionable outcomes

COMPANY CONFIDENTIAL © Akendi Inc. All Rights Reserved.

BENEFITS

- Prioritizes business and development investments on high-value areas
- Shapes the journey that customers take with your organization, service or product
- Identifies gaps in the customer experience
- Improves usage and completion rates

CALL FOR A CONSULTATION

Learn how our user-centered approach can help you. We offer complimentary telephone consultations and educational white papers. Contact us today!

+1.866.585.1660 (CAN)

+44 (0)1223 853907 (UK)

contact@akendi.com



CONTACT AKENDI
WWW.AKENDI.COM

Toronto / Ottawa, Canada
T +1.866.585.1660
E contact@akendi.com

London / Cambridge, UK
T +44 (0)1223 853907
E contact@akendi.co.uk

Akendi





EXPERIENCE MAPPING

Our established process for Experience Mapping includes these steps:

- Capturing the goals of a complete experience, including the business priorities, the business model, and key performance indicators for the overall experience
- Mapping sessions with internal stakeholders that have exposure to customers (e.g. sales, support, service staff)
- Surveys, customer observation and in-depth interviews with your customers and clients to flesh out and validate the experience matrix

Where warranted, additional specific research initiatives may be undertaken to sharpen the experience map or better understand particular touch point experiences.

Next, we will create a comprehensive experience matrix of touch points that encompasses initial awareness of the product and service through to usage, support, upgrade, and resale or disposal.

We will score each touch point on the experience map to provide you with baseline information to use for benchmarking and comparison to competitors. The experience map is a powerful tool that you can use to pinpoint areas for improvement, create competitive differentiation, and to bridge gaps to ensure the quality of your customers' experiences.

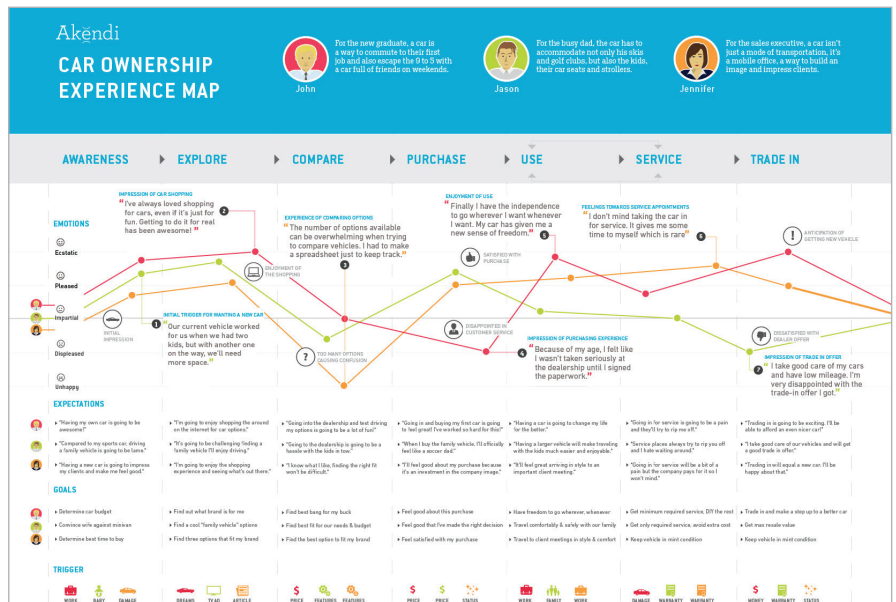
CONTACT US

TORONTO
30 Duncan Street, Suite 203
Toronto, ON M5V 2C3 Canada
T: 416.855.3367

OTTAWA
375 Richmond Road, Suite 2
Ottawa, ON K2A 0E7 Canada
T: 613.688.0906

CAMBRIDGE
The Tram Shed
184 East Road
Cambridge, UK CB1 1BG
T: +44 (0)1223 853907

LONDON
ScreenWorks, Studio 2.15
22 Highbury Grove
London, UK N5 2EF
T: +44 (0)20 3598 2601



Experience Map example

COMPANY CONFIDENTIAL © Akendi, Inc. All Rights Reserved.

